

Color Strand Puzzle

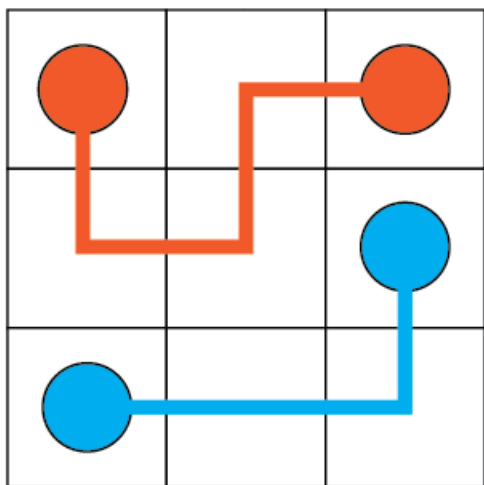
Preparation

Print out each player handout and give them to the players when directed, starting with the 8x8 puzzle. Print out each color tile sheet (preferably on thick card stock, 100% - no scaling) and cut out the tiles. At the beginning of play, divide the colored tiles up amongst the players. Do not mix up the colors, just give each player the whole stack of the same color.

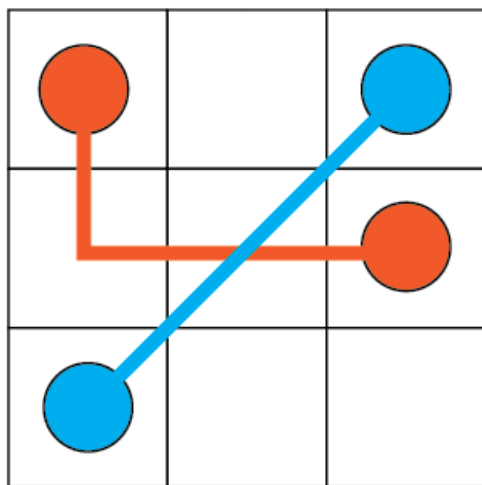
How to Play

Object of the Game: Connect the matching colors using the color tiles, while covering the whole board.

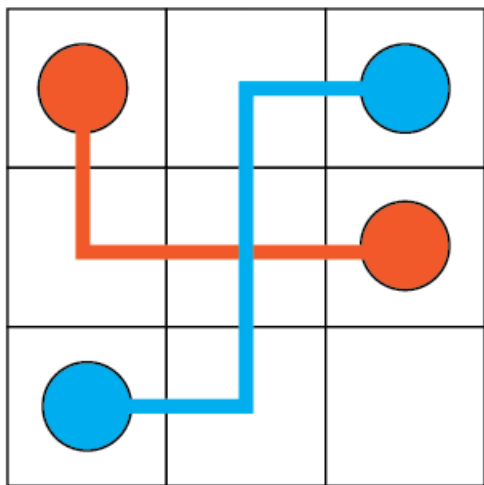
Use the colored tiles to create solid, unbroken paths connecting matching colors. Paths may neither cross each other, nor go diagonally across the board. Pair all colors and cover the entire board to solve the puzzle.



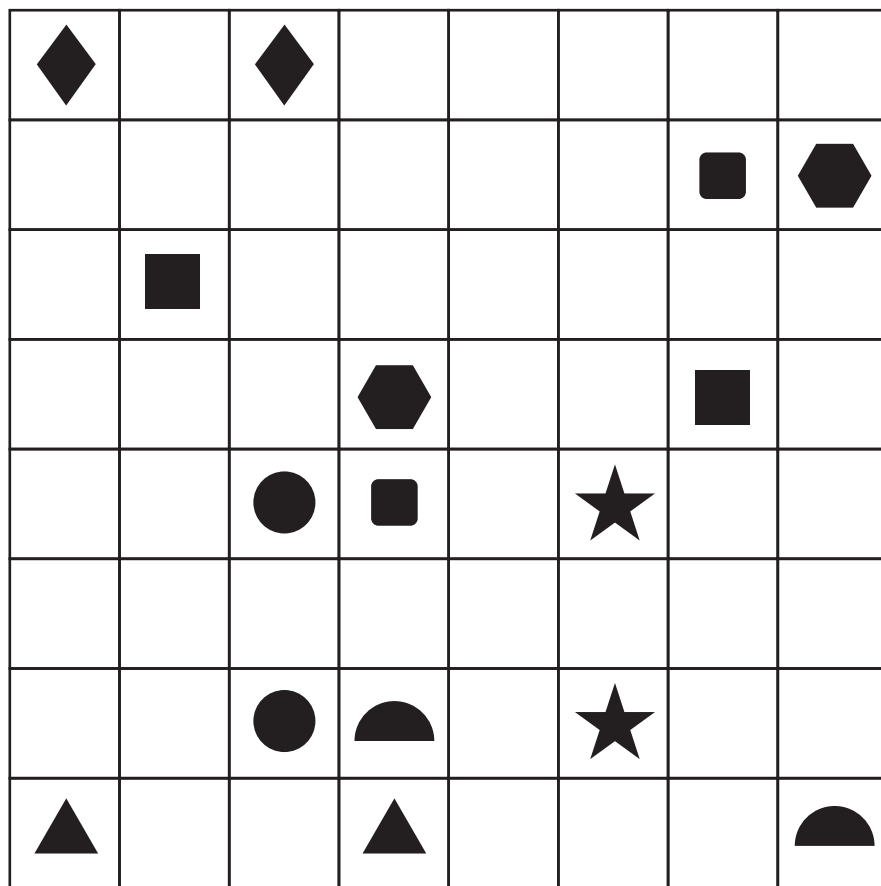
✓ Example



✗ Example

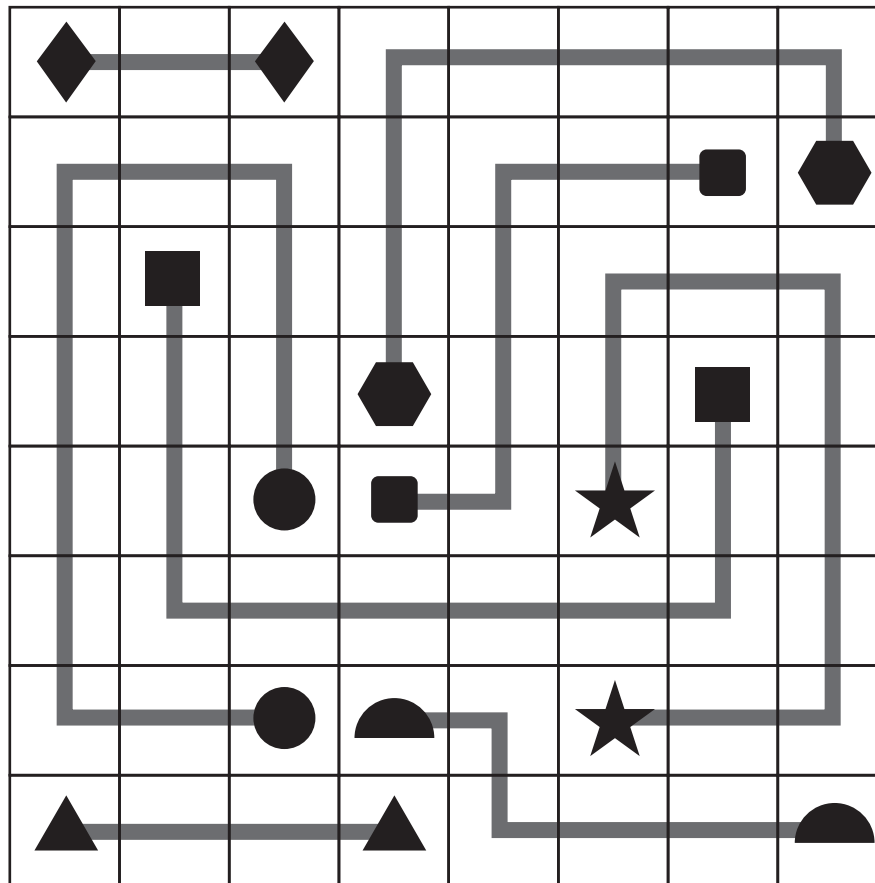


✗ Example

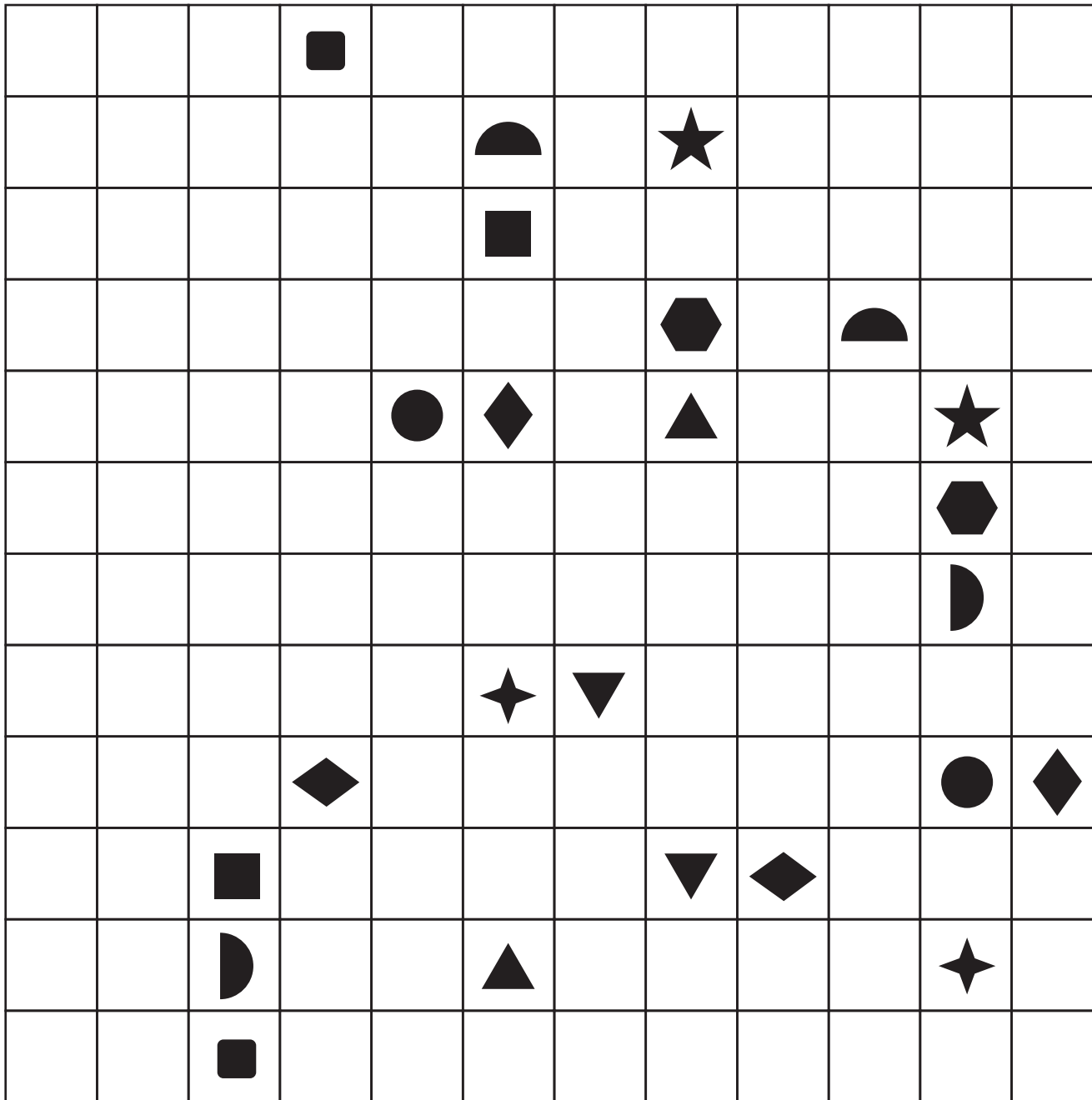


To Play: Use the tiles to create paths connecting matching shapes.
 No paths may cross each other. Pair all shapes and cover the entire board to solve the puzzle.

SOLUTION

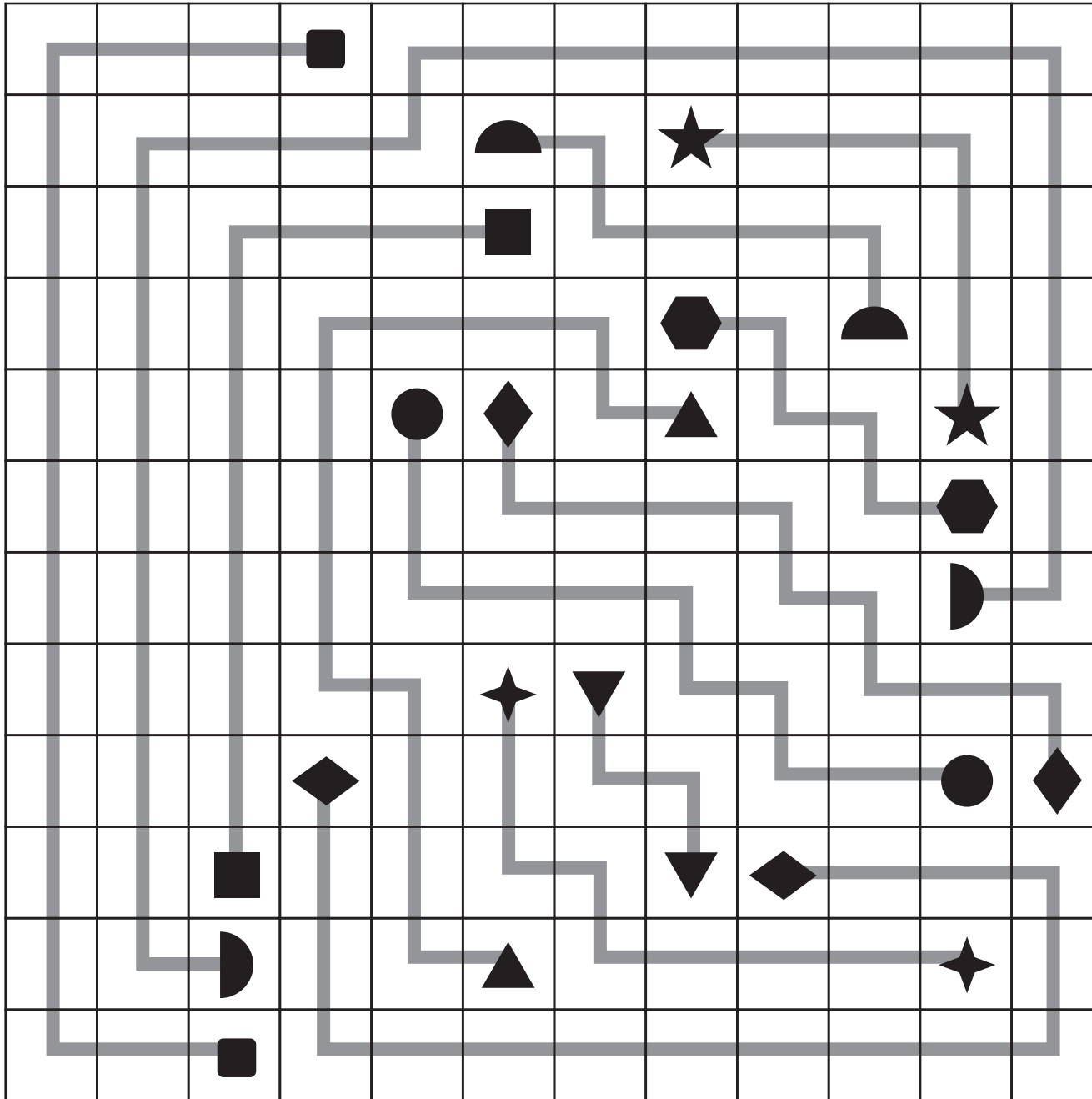


To Play: Use the tiles to create paths connecting matching shapes.
No paths may cross each other. Pair all shapes and cover the entire board to solve the puzzle.

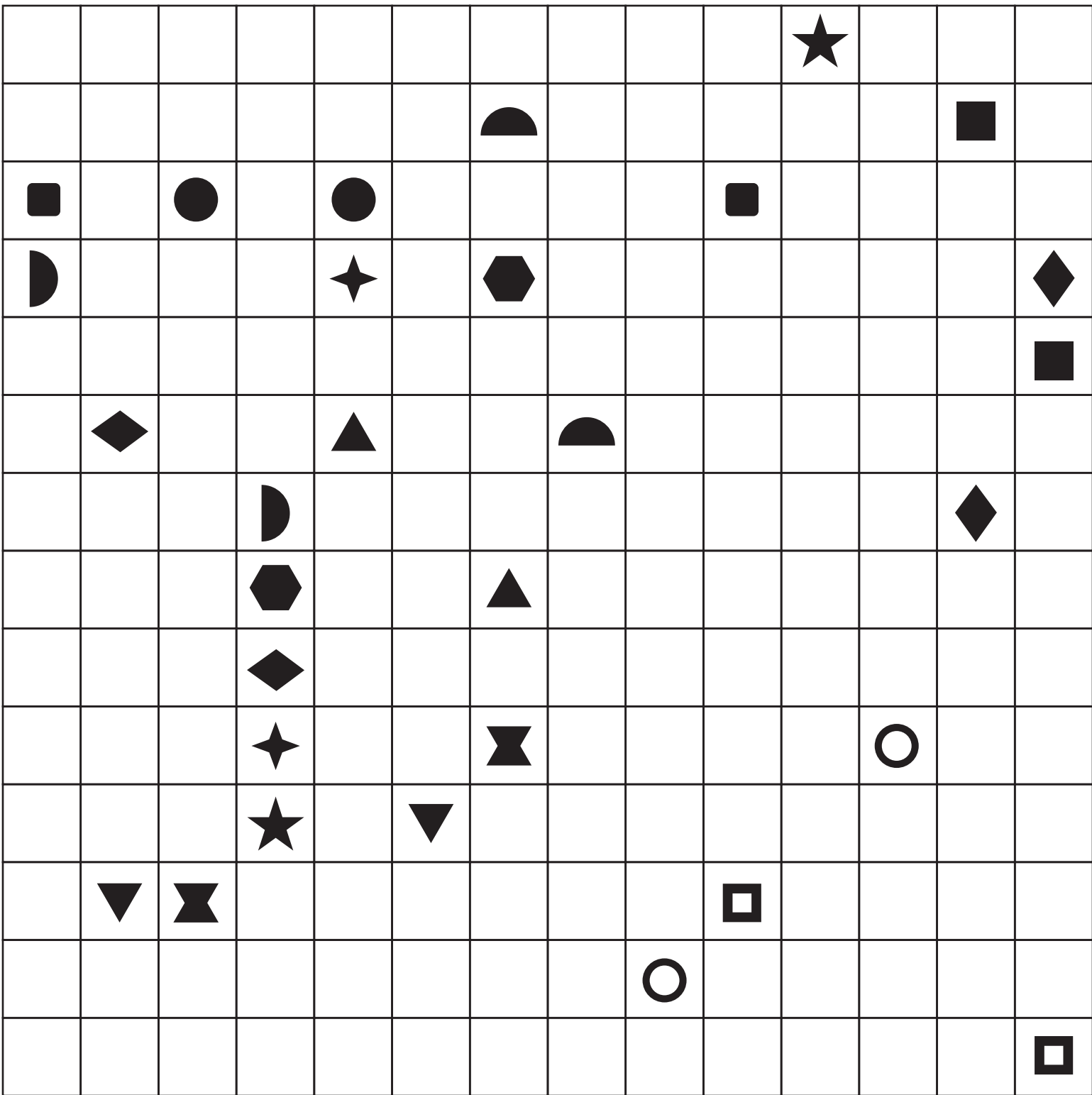


To Play: Use the tiles to create paths connecting matching shapes.
 No paths may cross each other. Pair all shapes and cover the entire board to solve the puzzle.

SOLUTION



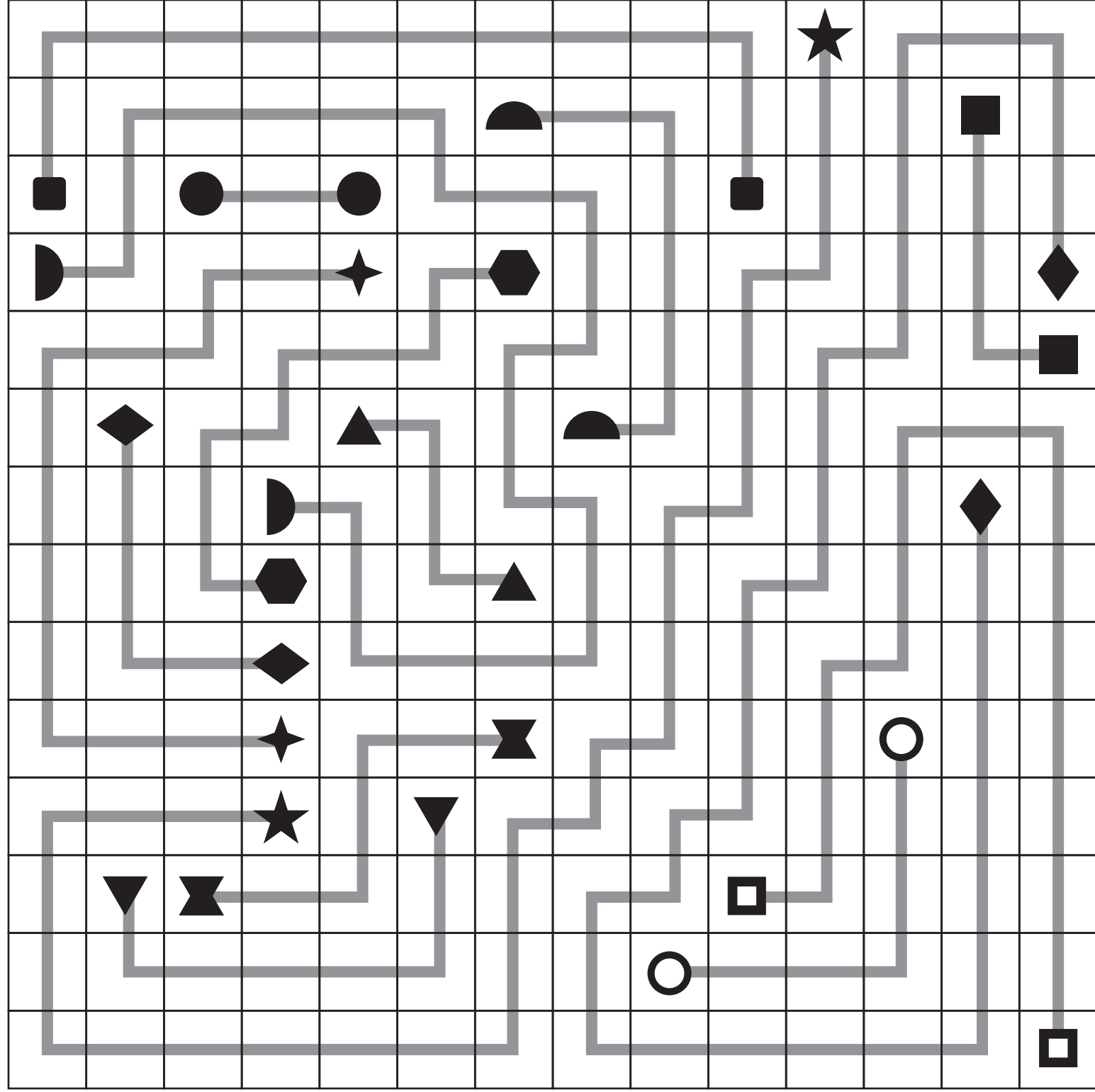
To Play: Use the tiles to create paths connecting matching shapes.
No paths may cross each other. Pair all shapes and cover the entire board to solve the puzzle.



To Play: Use the tiles to create paths connecting matching shapes.

No paths may cross each other. Pair all shapes and cover the entire board to solve the puzzle.

SOLUTION



To Play: Use the tiles to create paths connecting matching shapes.

No paths may cross each other. Pair all shapes and cover the entire board to solve the puzzle.

